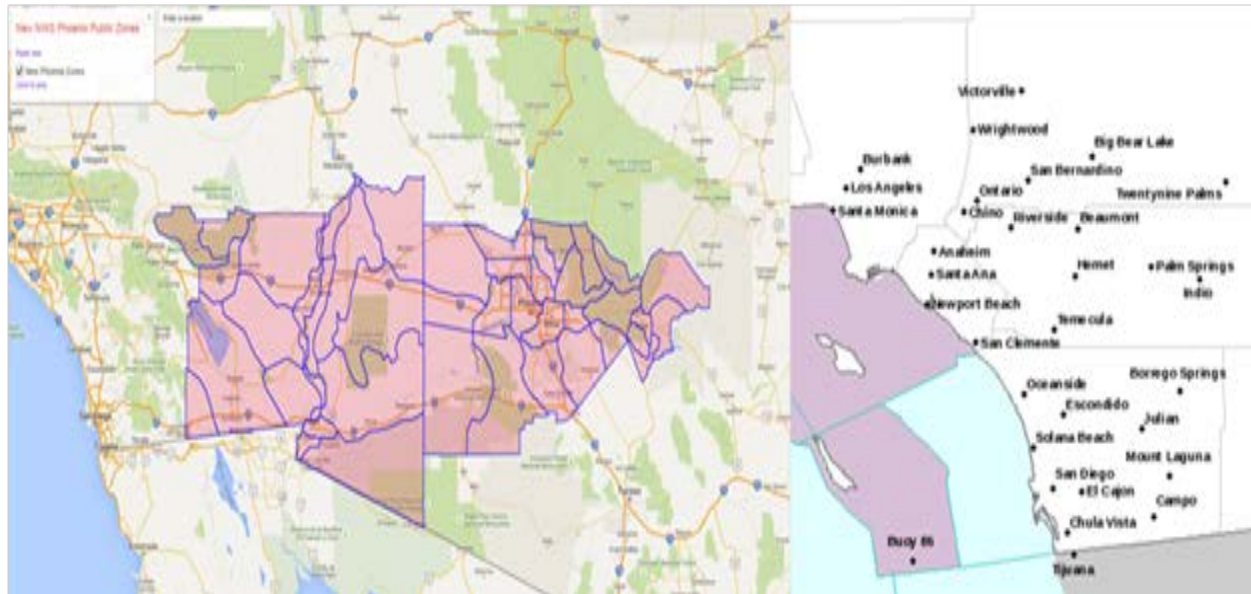


## APPENDIX C

### PUBLIC INFORMATION AND OTHER NOTICES

FIGURE C-1  
NATIONAL WEATHER SERVICE PUBLIC ZONES



**Fig C-1:** Illustrates the public zones serviced by the National Weather Service Office in Phoenix and San Diego. Imperial County, including southeast sections of Riverside County are part of the reporting public zone areas from the Phoenix office

**FIGURE C-2  
IMPERIAL COUNTY WEB POSTING  
OF POTENTIAL ELEVATED PM CONCENTRATIONS**

## Advisory Events

The information herein is NOT intended for use as a weather forecast. The Air District DOES NOT forecast but solely compiles information from both the Phoenix and San Diego National Weather Offices to relay information concerning potential changes in ambient air concentrations that may impact the public.

**February 6 2017**

**Be Advised**

**High wind levels have the potential to suspend particulate matter into the air. High levels of PM<sub>10</sub> may pose an impact to public health. It is recommended that active children and adults, and people with respiratory disease, such as asthma, limit their outdoor activities.**

Potential increases in PM<sub>10</sub> concentrations may increase to moderate or unhealthy level.

### Imperial County Weather Synopsis

#### SYNOPSIS FROM THE SAN DIEGO OFFICE

A trough moving across the region will bring periods rain through Tuesday along with gusty winds in the mountains and deserts. High pressure will bring fair and warmer weather Wednesday and Thursday. Another storm on Friday will bring another round of rain, gusty winds and cool weather through early Saturday. An offshore flow pattern sets up early next week with dry weather and areas of gusty northeast winds.

Rain this morning has been heaviest in Orange County where upwards of 0.50" has fallen through 9 AM. The highest amount was at Santiago Creek with a total of 1.14". Anaheim was second highest with 0.87", and Huntington Beach right behind with 0.86". Rain has been sparse in San Diego County with only a few mountain stations reporting a few hundredths of an inch. Snow levels were around 8000 feet with this warm system.

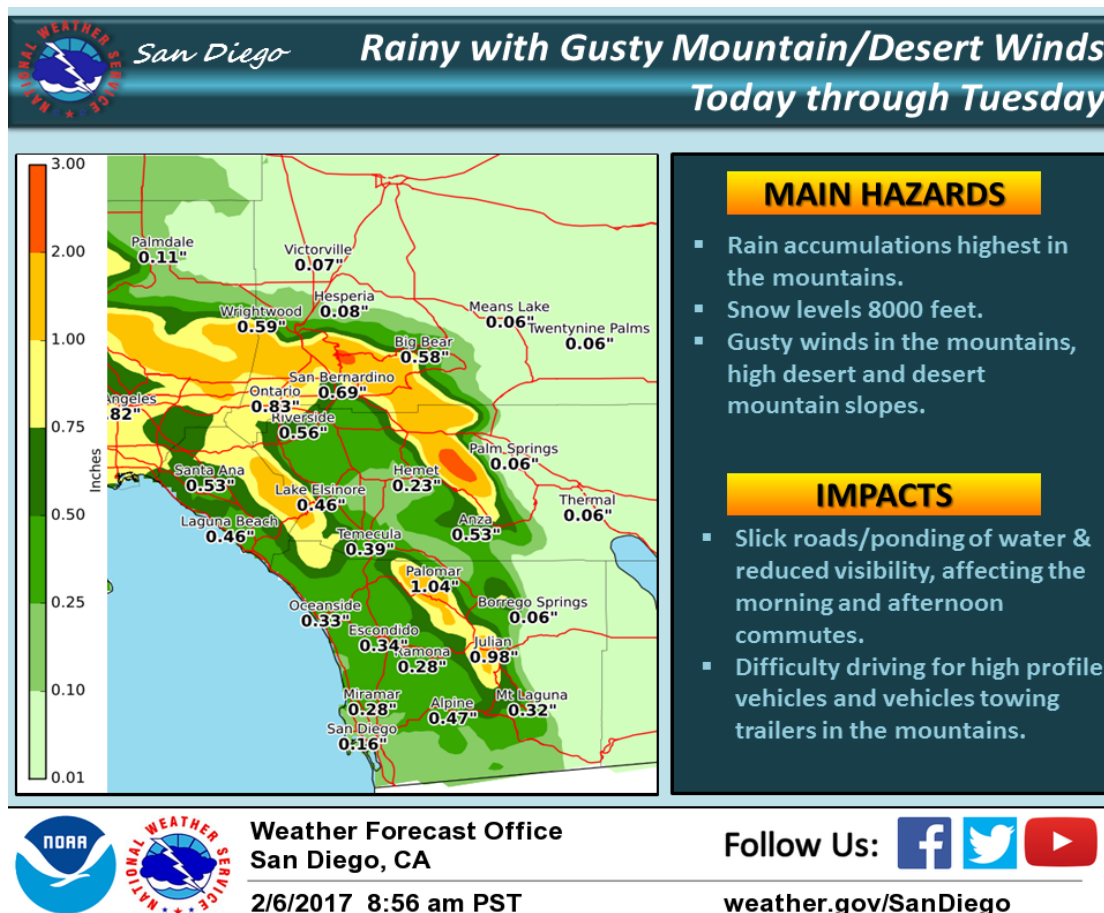
Winds will be strong in the mountains and some desert areas with peak gusts above 50 mph. A Wind Advisory is in effect through Tuesday.

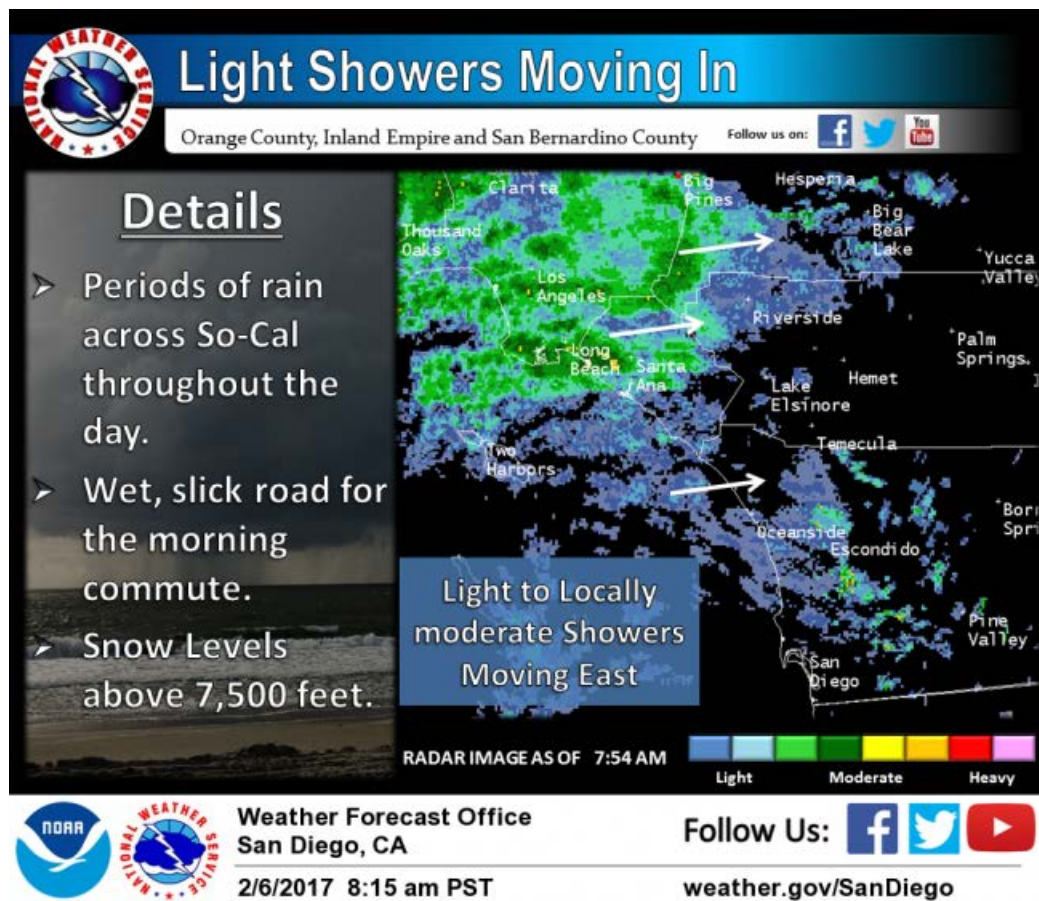
High pressure aloft will bring fair, dry and warmer weather Wednesday and Thursday. The next low pressure trough over the Pacific approaches SoCal Friday bring a chance for showers through Friday night. It will also bring gusty onshore winds and colder weather. Showers could linger into Saturday. The low evolves into a closed low over AZ on Sunday, and high pressure will build over the the West Coast over the weekend. That will set up offshore flow with both upper and surface support for areas of strong

northeast winds Sunday and Monday. We'll have clear skies and warmer weather west of the mountains

#### SYNOPSIS FROM THE PHOENIX OFFICE

A couple of weak weather disturbances will lead to some modest cooling today into Tuesday along with a slight chance of light showers over the higher terrain. Breezy to windy conditions can be expected over portions of southeast California and southwest Arizona as well. Strong high pressure brings a warming trend Wednesday and Thursday. A trough of low pressure moves in next weekend for cooler temperatures and breeziness along with a slight chance of rain...mainly for the higher terrain





**FIGURE C-3  
IMPERIAL COUNTY WEB POSTING  
OF POTENTIAL ELEVATED PM CONCENTRATIONS**

## Advisory Events

The information herein is NOT intended for use as a weather forecast. The Air District DOES NOT forecast but solely compiles information from both the Phoenix and San Diego National Weather Offices to relay information concerning potential changes in ambient air concentrations that may impact the public.

**February 17, 2017 to February 21, 2017**

### Be Advised

**High wind levels have the potential to suspend particulate matter into the air. High levels of PM<sub>10</sub> may pose an impact to public health. It is recommended that active children and adults, and people with respiratory disease, such as asthma, limit their outdoor activities.**

Potential increases in PM<sub>10</sub> concentrations may increase to moderate or unhealthy level.

### Imperial County Weather Synopsis

The National Weather Service office in San Diego is confident that major impacts will occur with this storm system...possibly the strongest storm we've seen this winter.

Rainfall forecast through tonight...

ORANGE COUNTY.....2.5 to 5 inches (highest totals in the Santa Ana Mountains)

SAN BERNARDINO MOUNTAINS...3 TO 8 inches (highest along SSW slopes)

RIVERSIDE COUNTY.....2 TO 3 inches

SAN DIEGO COUNTY.....1.5 TO 2.5 inches

UPPER AND LOWER DESERTS....0.5 to 1 inch

#### SYNOPSIS FROM THE SAN DIEGO OFFICE

Significant impacts this afternoon and evening as a strong Pacific storm moves across the region. This storm will bring damaging winds and flooding to the area this afternoon and evening. Showers will continue tonight through Saturday night...with additional snow accumulation possible in the mountains. Dry weather returns Sunday, but some lighter rain is possible Monday and again Wednesday.

Moderate to heavy rain is currently in Santa Barbara and Ventura Counties this morning. This band will gradually move east into Orange County by afternoon. Strong winds will also crank up preceding the rain band gradually during the day and become

really strong along this band for the afternoon and evening. Gusts along the coast will exceed 50 mph and gusts in parts of the mountains and deserts will exceed 70 mph. This will be a widespread strong wind event! Plan for widespread urban flooding, small stream flooding in the backcountry, and particularly for burn areas. Also expect the wind to knock down trees and power lines, and the resulting damage and power outages.

Heaviest rainfall amounts will be over northern areas with a little lower amounts over SD County. With very high atmospheric moisture in place rainfall rates of one-half to up to 1 inch per hour will be possible during the height of the rain event with highest rates along favorable SSW facing slopes. This amount of short-duration rainfall will likely lead to significant flooding issues in urbanized areas and flash flooding in the mountains. Thunderstorms are remotely possible and may bring briefly intense bursts of rain

#### SYNOPSIS FROM THE PHOENIX OFFICE

A strong Pacific weather system is expected to bring periods of widespread cloudiness today, with rainfall potential first increasing over southeast California this evening and spreading eastward into western and central Arizona through Saturday. Locally heavy rainfall amounts will be possible, especially across parts of southeast California, the lower Colorado River Valley, and the higher terrain north and east of Phoenix. Clearing skies and a warming trend are expected early next week before another cold front moves through the region Thursday



## WEATHER STORY PHOENIX OFFICE

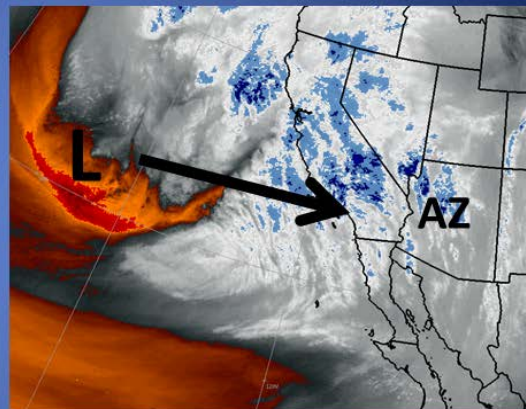
## Wet Weather Coming

**What's Coming**

A Pacific low pressure system centered west of California as of Friday morning.

**What To Expect**

- Very strong winds and areas of blowing dust this afternoon and tonight SW AZ and SE CA (breezy elsewhere).
- Scattered showers tonight becoming widespread Saturday. Tapering off Sunday.
- Amounts of .50 to 1.00 inch lower deserts; 1 to 1.5 inches over higher terrain.
- Localized flooding possible – especially higher terrain.



Weather Forecast Office  
Phoenix, AZ

2/17/2017 6:00 am MST

Follow Us:   

[weather.gov/Phoenix](http://weather.gov/Phoenix)

## WEATHER STORY SAN DIEGO OFFICE

## Hazards Associated with Strong, Gusty Winds

**Downed tree risk in SW CA**

- Many drought-weakened trees from years of below-normal rainfall
- Above-normal rainfall has created wet soils in most areas
- Trees more easily downed by moderate to strong wind, especially strong gusts

**During/after strong winds:**

*Do not go near downed powerlines; report them to local police*

**Before a strong wind event:**

- Trim tree branches away from your house & powerlines.
- Secure loose gutters and shutters.
- Identify an interior room of your home where you can take shelter in during high wind warnings.
- Secure items outside your home so they don't blow away or fly through a window.

**During Strong winds**

- Seek shelter inside a sturdy building
- While driving:
  - Shelter in your car, away from trees and powerlines if possible
  - Keep a distance from high profile vehicles as they may be flipped by a strong gust of wind.



**Weather Forecast Office  
San Diego, CA**

**2/17/2017 7:54 am PST**

**Follow Us:**



**[weather.gov/SanDiego](http://weather.gov/SanDiego)**



**FIGURE C-4  
AIRQUALITY INDEX**

<b>Air Quality Index Levels of Health Concern</b>	<b>Numerical Value</b>	<b>Meaning</b>
<b>Good</b>	<b>0 to 50</b>	<b>Air quality is considered satisfactory, and air pollution poses little or no risk.</b>
<b>Moderate</b>	<b>51 to 100</b>	<b>Air quality is acceptable; however, for some pollutants there may be a moderate health concern for a very small number of people who are unusually sensitive to air pollution.</b>
<b>Unhealthy for Sensitive Groups</b>	<b>101 to 150</b>	<b>Members of sensitive groups may experience health effects. The general public is not likely to be affected.</b>
<b>Unhealthy</b>	<b>151 to 200</b>	<b>Everyone may begin to experience health effects; members of sensitive groups may experience more serious health effects.</b>
<b>Very Unhealthy</b>	<b>201 to 300</b>	<b>Health alert: everyone may experience more serious health effects.</b>
<b>Hazardous</b>	<b>301 to 500</b>	<b>Health warnings of emergency conditions. The entire population is more likely to be affected.</b>

**Fig C-4:** The Air Quality Index AQI is an index for reporting daily air quality. It tells you how clean or polluted your air is, and what associated health effects might be a concern for you. The AQI focuses on health affects you may experience within a few hours or days after breathing polluted air. EPA calculates the AQI for five major air pollutants regulated by the Clean Air Act: ground-level ozone, particle pollution (also known as particulate matter), carbon monoxide, sulfur dioxide, and nitrogen dioxide. For each of these pollutants, EPA has established national air quality standards to protect public health .Ground-level ozone and airborne particles are the two pollutants that pose the greatest threat to human health in this country. Source:

<https://airnow.gov/index.cfm?action=aqibasics.aqi>

### FIGURE C-5 IMPERIAL COUNTY DAILY WEATHER AND AG BURNING INFORMATION

Imperial County Air Pollution Control District  
Daily Weather and Ag. Burning Information

Date: Friday, February 17, 2017

Yesterday's Weather Observations at Imperial Airport (ASOS) FAA/NWS

LOCAL TIME	TEMP °F	WINDS MILES PER HOUR	VISIBILITY MILES
7 AM	52	WSW 3	10
8 AM	52	-	-
9 AM	-	-	-
10 AM	71	-	10
11 AM	73	CALM	10
NOON	77	-	10
1 PM	79	CALM	10
2 PM	80	S 8	10
3 PM	80	ESE 9	10
4 PM	80	ESE 10	10
5 PM	78	SE 11	10
6 PM	75	SSE 9	10
7 PM	71	SSW 6	10

Max. Temperature yesterday was 81 degrees

Today's Mt. Signal Visibility at 7:30 AM Clear NKX 12Z 500 MB Height \_\_\_\_\_  
1Y7 12Z 500 MB Height \_\_\_\_\_

**Forecasts**  
**High Today** 71 to 76

Local Forecast (Issued 8 AM Local)	Computer Forecast (RUC 40KM 12Z)
	<b>2:00 pm</b>
Est. Time Mixing Height reaches 3000 feet	_____ feet
Forecast of Maximum Mixing Height	_____ feet
Forecast for Morning surface winds	<b>ESE 5-10</b> mph <b>VRBL 5-10</b> mph
Forecast for afternoon surface winds	<b>ESE 15-20/G 3-</b> mph <b>S 10-15</b> mph
Forecast for evening surface winds	<b>SE 5-15/G 25</b> mph
Forecast 10 AM - 3 PM transport winds	<b>SE 8 then S 25</b> mph

Comments/Complaints: Stormy today in Imperial County.

Burn Hours \_\_\_\_\_ ARB No Burn Day \_\_\_\_\_ District called No Burn Day XX

Total actually burned today \_\_\_\_\_ acres Crops burned \_\_\_\_\_

IMPERIAL COUNTY AIR POLLUTION CONTROL DISTRICT 2011 Int CM

**Fig C-5:** Is a copy of the Imperial County Air Pollution Control District official record of the conditions as they existed for a determination of a "No Burn" day on February 17, 2017

**FIGURE C-6**  
**IMPERIAL COUNTY AFFIDAVIT OF 30 DAY PUBLIC NOTICE**

**Fig C-6:** Is a copy of the Imperial County Air Pollution Control District official record (affidavit) affirming the publication of the notice of availability of the Exceptional Events Demonstration for February 17, 2017. The date for closing comments was September 6, 2019

**FIGURE C-7**  
**IMPERIAL COUNTY COMMENTS REGARDING THE FEBRUARY 17, 2017 EE**  
**DEMONSTRATION**

Awaiting Final Comment Period