

APPENDIX C PUBLIC INFORMATION AND OTHER NOTICES

FIGURE C-1 NATIONAL WEATHER SERVICE PUBLIC ZONES

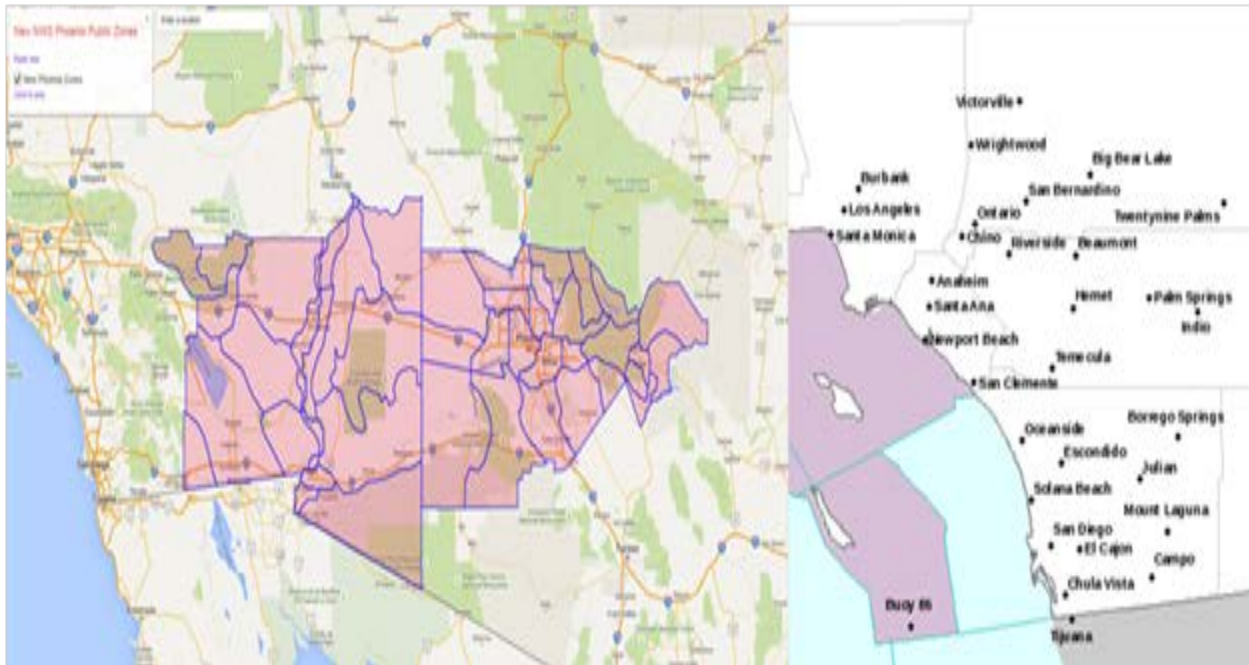


Fig C-1: Illustrates the public zones serviced by the National Weather Service Office in Phoenix and San Diego. Imperial County, including southeast sections of Riverside County are part of the reporting public zone areas from the Phoenix office

FIGURE C-2 WEATHER STORY SAN DIEGO OFFICE



Fig C-2: A Weather Story forecast issued by the San Diego NWS office at 1203 PDT May 24, 2017 forecasting high winds and light precipitation

FIGURE C-3 WEATHER STORY SAN DIEGO OFFICE

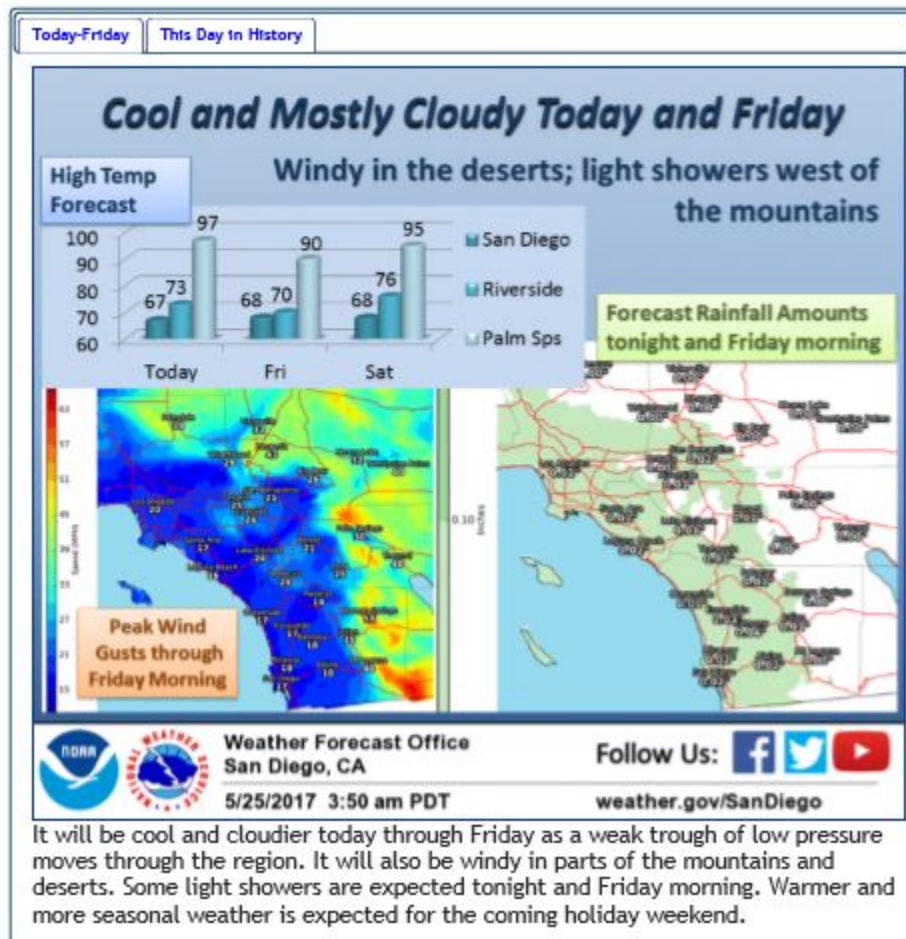


Fig C-3: A Weather Story forecast issued by the San Diego NWS office at 0350 PDT May 25, 2017 forecasting high winds and light precipitation

**FIGURE C-4
WEATHER STORY PHOENIX OFFICE**



Fig C-4: A Weather Story forecast issued by the Phoenix NWS office at 00602 PDT May 25, 2017 forecasting high winds and possible blowing dust

**FIGURE C-5
WEATHER STORY SAN DIEGO OFFICE**

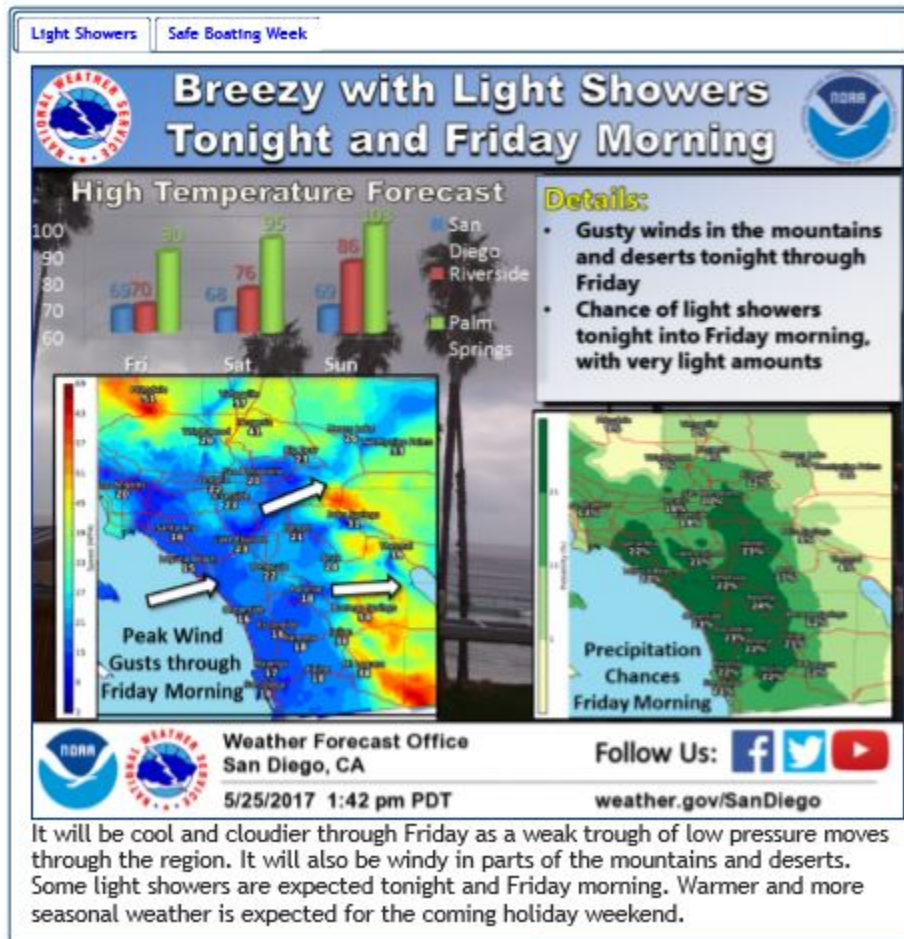


Fig C-5: A Weather Story forecast issued by the San Diego NWS office at 1342 PDT May 25, 2017 forecasting high winds and light precipitation

**FIGURE C-6
AIR QUALITY INDEX**

Air Quality Index Levels of Health Concern	Numerical Value	Meaning
Good	0 to 50	Air quality is considered satisfactory, and air pollution poses little or no risk.
Moderate	51 to 100	Air quality is acceptable; however, for some pollutants there may be a moderate health concern for a very small number of people who are unusually sensitive to air pollution.
Unhealthy for Sensitive Groups	101 to 150	Members of sensitive groups may experience health effects. The general public is not likely to be affected.
Unhealthy	151 to 200	Everyone may begin to experience health effects; members of sensitive groups may experience more serious health effects.
Very Unhealthy	201 to 300	Health alert: everyone may experience more serious health effects.
Hazardous	301 to 500	Health warnings of emergency conditions. The entire population is more likely to be affected.

Fig C-6: The Air Quality Index AQI is an index for reporting daily air quality. It tells you how clean or polluted your air is, and what associated health effects might be a concern for you. The AQI focuses on health affects you may experience within a few hours or days after breathing polluted air. EPA calculates the AQI for five major air pollutants regulated by the Clean Air Act: ground-level ozone, particle pollution (also known as particulate matter), carbon monoxide, sulfur dioxide, and nitrogen dioxide. For each of these pollutants, EPA has established national air quality standards to protect public health. Ground-level ozone and airborne particles are the two pollutants that pose the greatest threat to human health in this country. Source: <https://airnow.gov/index.cfm?action=aqibasics.aqi>

FIGURE C-7 IMPERIAL COUNTY ISSUED NO BURN DAY

Imperial County Air Pollution Control District
Daily Weather and Ag. Burning Information

Date: Thursday, May 25, 2017

Yesterday's Weather Observations at Imperial Airport (ASOS) FAA/NWS

LOCAL TIME	TEMP °F	WINDS MILES PER HOUR	VISIBILITY MILES
7 AM	78	WSW 6	10
8 AM	86	NW 5	10
9 AM	92	NNW 7	10
10 AM	96	CALM	10
11 AM	101	-	10
NOON	103	SW 3	10
1 PM	106	-	10
2 PM	108	S 11	10
3 PM	109	W 21/ G 25	10
4 PM	106	W 25/ G 32	8
5 PM	101	W 25/ G 37	10
6 PM	98	W 22/ G 31	10
7 PM	93	W 23/ G 33	10

Max. Temperature yesterday was 109 degrees

Today's Mt. Signal Visibility at 7:30 AM Clear NFK 12Z 500 MB Height _____
 1Y7 12Z 500 MB Height _____

Forecasts
High Today 94 to 99

	Local Forecast (Issued 8 AM Local)	Computer Forecast (RUC 40KM 12Z)
Est. Time Mixing Height reaches 3000 feet	-	<u>10:00 am</u>
Forecast of Maximum Mixing Height	-	<u>7,155</u> feet
Forecast for Morning surface winds	<u>W 15-25/ G 35</u> mph	<u>W 10-15</u> mph
Forecast for afternoon surface winds	<u>W 15-25/ G 35</u> mph	<u>W 15-20</u> mph
Forecast for evening surface winds	<u>W 15-25/ G 30</u> mph	
Forecast 10 AM - 3 PM transport winds	<u>W 15-20</u> mph	

Comments/Complaints: Windy with blowing dust today in Imperial County.

Burn Hours _____ ARB No Burn Day _____ District called No Burn Day XX

Total actually burned today _____ acres Crops burned _____

IMPERIAL COUNTY AIR POLLUTION CONTROL DISTRICT 2011 Int CM

Fig C-7: Is a copy of the Imperial County Air Pollution Control District official record of the conditions as they existed for a determination of a "No Burn" day on May 25, 2017

**FIGURE C-8
IMPERIAL COUNTY AFFIDAVIT OF 30 DAY PUBLIC NOTICE**

Fig C-8: Is a copy of the Imperial County Air Pollution Control District official record (affidavit) affirming the publication of the notice of availability of the Exceptional Events Demonstration for May 25, 2017. The date for closing comments was September 6, 2019

**FIGURE C-9
IMPERIAL COUNTY COMMENTS REGARDING THE MAY 25, 2017 EE
DEMONSTRATION**

Awaiting Final Comment Period