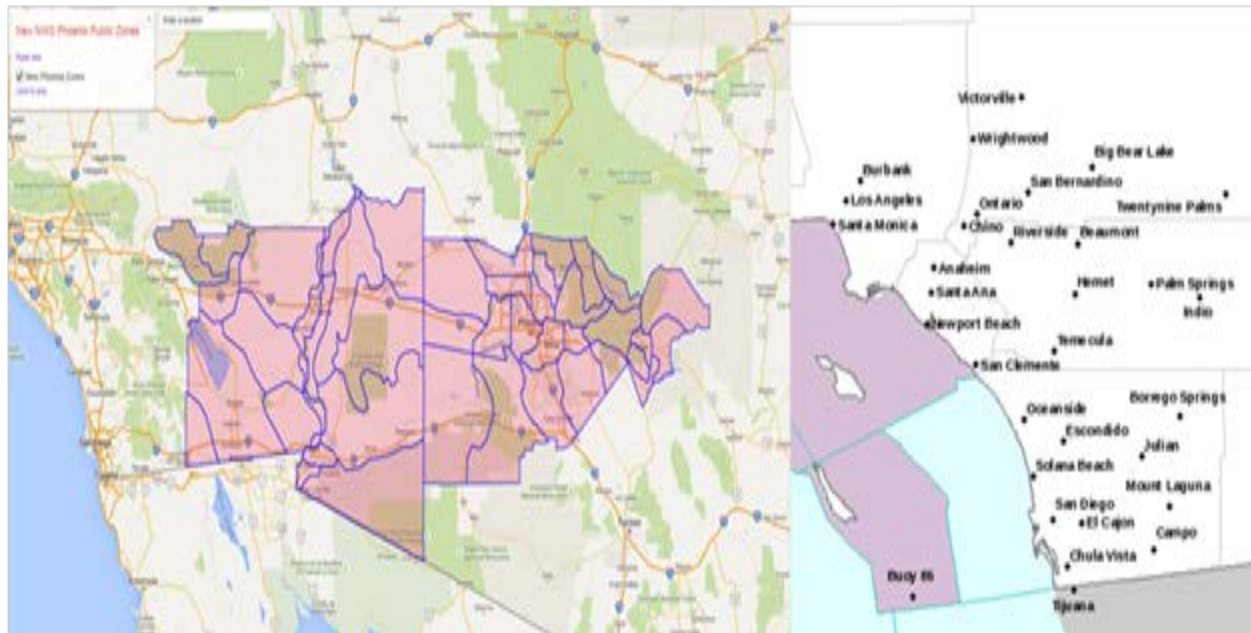


## APPENDIX C

### PUBLIC INFORMATION AND OTHER NOTICES

**FIGURE C-1**  
**NATIONAL WEATHER SERVICE PUBLIC ZONES**



**Fig C-1:** Illustrates the public zones serviced by the National Weather Service Office in Phoenix and San Diego. Imperial County, including southeast sections of Riverside County are part of the reporting public zone areas from the Phoenix office

**FIGURE C-2**  
**IMPERIAL COUNTY WEB POSTING**  
**OF POTENTIAL ELEVATED PM CONCENTRATIONS**

## Advisory Events

The information herein is NOT intended for use as a weather forecast. The Air District DOES NOT forecast but solely compiles information from both the Phoenix and San Diego National Weather Offices to relay information concerning potential changes in ambient air concentrations that may impact the public.

May 10 2018
Be Advised
<p><b>High wind levels have the potential to suspend particulate matter into the air. High levels of PM10 may pose an impact to public health. It is recommended that active children and adults, and people with respiratory disease, such as asthma, limit their outdoor activities.</b></p> <p>Potential increases in PM<sub>10</sub> concentrations may increase to moderate or unhealthy level.</p>
Imperial County Weather Synopsis
<p><b>IMPERIAL COUNTY</b></p> <p>Another day of very warm temperatures in Imperial County as highs will range from 100 to 105 degrees. Temperatures will drop on Friday as an approaching low pressure system moves through the region.</p> <p>On Friday, a low pressure system will bring windy conditions across a wide area of southeastern California. A WIND ADVISORY has been issued for the following portions of imperial County, effective 2 a.m. Friday through 9 p.m. Friday:</p> <p>The southeast portion of Imperial County including the Chuckwalla Mountains, Imperial County Southeast, Chuckwalla Valley, and the cities of Imperial Hot Mineral Springs, Winterhaven, and Midland.</p> <p>Imperial Valley, including the cities of El Centro, Calexico, Alamo, and Brawley.</p> <p>Imperial County West, including the cities of Coolidge Springs, Salton City, Winona, Coyote Wells, Ocotillo, and Plaster City.</p> <p>Imperial County Southwest, including the city of Mountain Spring.</p> <p>Southwest to west winds will increase Friday morning through the afternoon in the above fore mentioned areas. Winds 15-20 mph in the morning will increase to 20-30 mph in the afternoon with gusts reaching 40 mph. Winds in the southwest portion of the county will be somewhat higher. Patch blowing dust will result from the windy conditions.</p> <p><b><u>WEATHER SAN DIEGO OFFICE</u></b></p> <p>Temperatures will remain warm today, particularly in the deserts, but will cool on Friday and into the weekend as a low pressure system moves in on Friday and through the weekend. As a result of the low pressure system, strong winds will develop in mountains and deserts Friday and Friday night. The NWS San Diego office has issued a Wind Advisory for the mountains and deserts for Friday through Friday night. The wind advisory is in effect from 10 AM Friday to 5 AM PDT Saturday for Apple and Lucerne Valleys-Coachella Valley-Riverside County Mountains-San</p>

Bernardino County Mountains-San Diego County Deserts-San Diego County Mountains-San Geronio Pass near Banning. West winds will be increasing on and look to peak Friday afternoon through evening with gusts to 50 mph.

### **WEATHER PHOENIX OFFICE**

After another very warm day today, an approaching weather system will bring a cooling trend starting Friday. The windy and dry conditions on Friday will lead to very high fire danger across Arizona. Wind gusts on Thursday should remain under 25 mph for the most part, but will dramatically increase on Friday as the low center moves into the Great Basin. Windy conditions will develop Friday afternoon with Advisory level winds across portions of southeast California and over locations just to the southeast and east of Phoenix. The strong winds will create dangerous fire danger conditions Friday afternoon and evening leading to Red Flag Warnings virtually across all of Arizona.

#### **Weather Story Phoenix Station**

**Red Flag Warning**  
SOUTHWEST AND SOUTH-CENTRAL ARIZONA

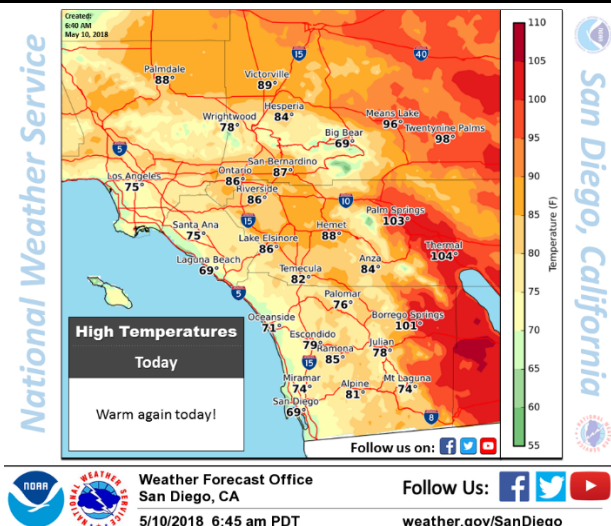
- **Timing**...Noon through 8 pm Friday.
- **Winds**...Southwest 15-30 mph with gusts over 45 mph.
- **Relative Humidity**...8-14 percent.
- **Impacts**... Any fires that are started will quickly become out of control due to the combination of strong winds and low relative humidity

**HIGH FIRE DANGER**

Reminder: Take notice of any ban burns in effect in your county!

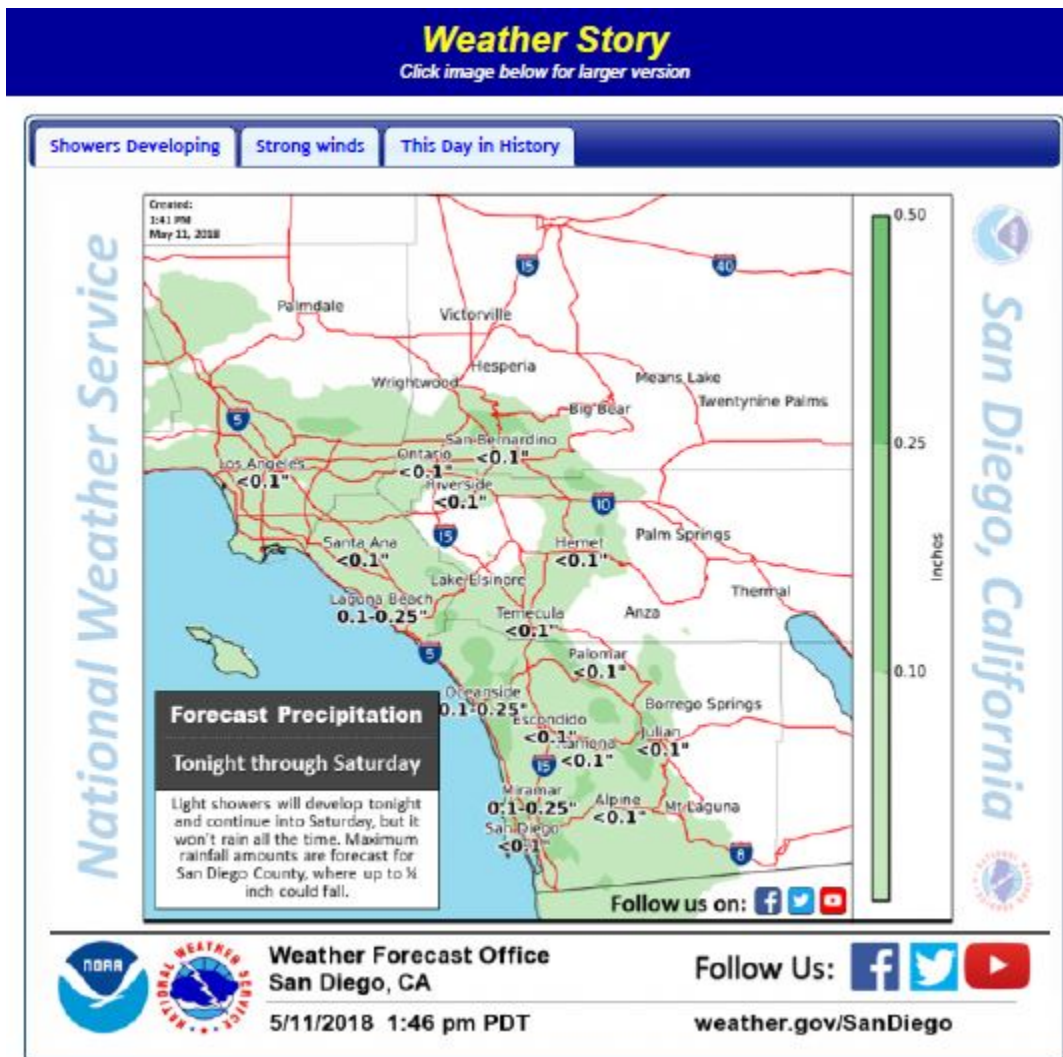
Interact With Us [f](#) NWSPhoenix [Weather.Gov/PSR](#) [@NWSPhoenix](#) [YouTube](#) NWSPhoenix

#### **Weather Story San Diego Station**



**Fig C-2:** Copy of the ICAPCD webpage advisory

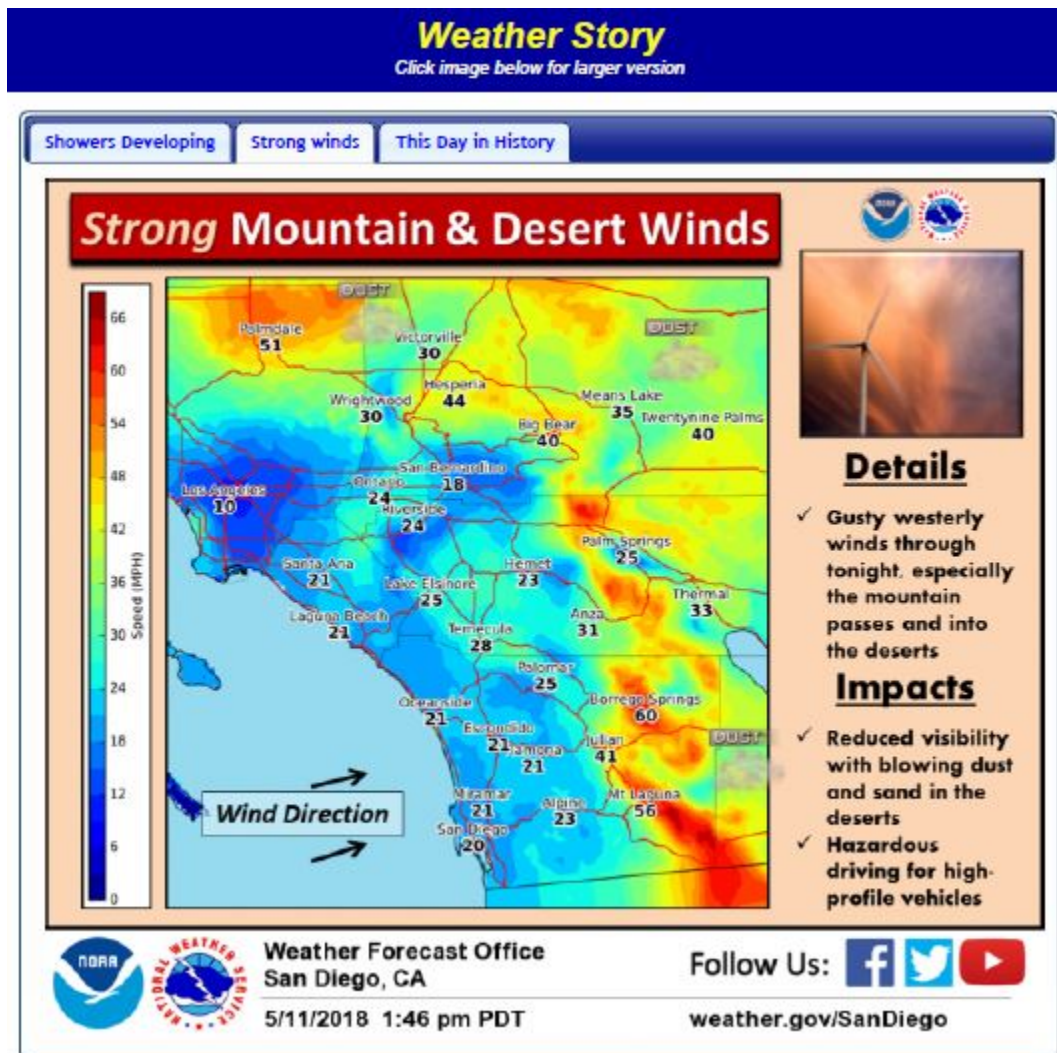
**FIGURE C-3**  
**SAN DIEGO NWS OFFICE WEATHER STORY MAY 11, 2018**



**Fig C-3:** Illustrates the chance of precipitation for the region



**FIGURE C-4**  
**SAN DIEGO WEATHER STORY MAY 11, 2018**



**Fig C-4:** Illustrates the extent of the high winds across the region

## FIGURE C-5 PHOENIX NWS OFFICE WEATHER STORY MAY 11, 2018



**Fig C-5:** Illustrates the extent of the high fire danger across the region

## FIGURE C-6 PHOENIX NWS OFFICE WEATHER STORY MAY 11, 2018



**Fig C-6:** Illustrates the extent of the high winds and blowing dust in the deserts

**FIGURE C-7  
AIR QUALITY INDEX**

<b>Air Quality Index Levels of Health Concern</b>	<b>Numerical Value</b>	<b>Meaning</b>
<b>Good</b>	<b>0 to 50</b>	<b>Air quality is considered satisfactory, and air pollution poses little or no risk.</b>
<b>Moderate</b>	<b>51 to 100</b>	<b>Air quality is acceptable; however, for some pollutants there may be a moderate health concern for a very small number of people who are unusually sensitive to air pollution.</b>
<b>Unhealthy for Sensitive Groups</b>	<b>101 to 150</b>	<b>Members of sensitive groups may experience health effects. The general public is not likely to be affected.</b>
<b>Unhealthy</b>	<b>151 to 200</b>	<b>Everyone may begin to experience health effects; members of sensitive groups may experience more serious health effects.</b>
<b>Very Unhealthy</b>	<b>201 to 300</b>	<b>Health alert: everyone may experience more serious health effects.</b>
<b>Hazardous</b>	<b>301 to 500</b>	<b>Health warnings of emergency conditions. The entire population is more likely to be affected.</b>

**Fig C-7:** The Air Quality Index AQI is an index for reporting daily air quality. It tells you how clean or polluted your air is, and what associated health effects might be a concern for you. The AQI focuses on health affects you may experience within a few hours or days after breathing polluted air. EPA calculates the AQI for five major air pollutants regulated by the Clean Air Act: ground-level ozone, particle pollution (also known as particulate matter), carbon monoxide, sulfur dioxide, and nitrogen dioxide. For each of these pollutants, EPA has established national air quality standards to protect public health. Ground-level ozone and airborne particles are the two pollutants that pose the greatest threat to human health in this country. Source:

<https://airnow.gov/index.cfm?action=aqibasics.aqi>



### FIGURE C-8 DAILY WEATHER AND AG BURNING INFORMATION

Imperial County Air Pollution Control District  
Daily Weather and Ag. Burning Information

Date: Friday May 11 2018

Yesterday's Weather Observations at Imperial Airport (ASOS) FAA/NWS

LOCAL TIME	TEMP °F	WINDS MILES PER HOUR	VISIBILITY MILES
7 AM	71	SE 5	10
8 AM	79	SE 6	10
9 AM	84	SE 6	10
10 AM	88	ESE 5	10
11 AM	93	E 7	10
NOON	96	ESE 14	10
1 PM	101	SE 15	10
2 PM	102	SE 16	10
3 PM	105	SE 18 G25	10
4 PM	105	SE 21 G28	10
5 PM	105	S 10 G30	10
6 PM	101	SW 11	10
7 PM	97	W 10	10

Max. Temperature yesterday was 105 degrees

Today's Mt. Signal Visibility at 7:30 AM HAZY NKX 12Z 500 MB Height \_\_\_\_\_  
 1Y7 12Z 500 MB Height \_\_\_\_\_

**Forecasts**  
**High Today** 94 Local Forecast (Issued 8 AM Local) Computer Forecast (RUC 40KM 12Z)

Est. Time Mixing Height reaches 3000 feet	_____	10:30
Forecast of Maximum Mixing Height	_____ feet	4,265 feet
Forecast for Morning surface winds	WSW 5-15 mph	WSW 5-15 mph
Forecast for afternoon surface winds	WSW 15-25 G35 mph	WSW 15-25 G35 mph
Forecast for evening surface winds	W 20-25 G35 mph	
Forecast 10 AM - 3 PM transport winds	WSW 10-20 mph	

Comments/Complaints: \_\_\_\_\_

Burn Hours \_\_\_\_\_ ARB No Burn Day \_\_\_\_\_ District called No Burn Day YES

Total actually burned today \_\_\_\_\_ acres Crops burned \_\_\_\_\_

IMPERIAL COUNTY AIR POLLUTION CONTROL DISTRICT 2011 Int MC

**Fig C-8:** Is a copy of the Imperial County Air Pollution Control District official record of the conditions as they existed for a determination of a "No Burn" day on May 11, 2018

## FIGURE C-9 IMPERIAL COUNTY AFFIDAVIT OF 30 DAY PUBLIC NOTICE

### AFFIDAVIT OF PUBLICATION (2015.5 C.C.P.)

#### STATE OF CALIFORNIA

#### County of Imperial

I am a resident of the County aforesaid; I am over the age of eighteen years, and not a party to or interested in the above entitled matter. I am the principal clerk\* of the printer of the

#### Imperial Valley Press

a newspaper of general circulation, printed and published daily in the City of El Centro, County of Imperial and which newspaper has been adjudged a newspaper of general circulation by the Superior Court of the County of Imperial, State of California, under the date of October 9, 1951, Case Number 26775; that the notice, of which the annexed is a printed copy, has been published in each regular and entire issue of said newspaper and not in any supplement thereof on the following dates, to-wit:

09/20.

all in the year 2019

I certify (or declare) under penalty of perjury that the foregoing is true and correct.

SIGNATURE

Name of Account: I C AIR POLLUTION  
CONTROL  
Order Number: 11324959  
Ad Number: 31574360

\* Printer, Foreman of the Printer, or Principal Clerk of the Printer

Date: 21 st day of September, 2019,  
at El Centro, California.

This space is for the County Clerk's  
Filing Stamp:

**NOTICE OF AVAILABILITY  
OF THE DEMONSTRATION OF THE OCCURRENCE  
OF SEVEN EXCEPTIONAL EVENTS (EE)**

The Imperial County Air Pollution Control District (Air District) has prepared seven Draft Exceptional Event (EE) Demonstrations, which support the requested exclusion of measured 24-hour concentrations at the Air District air monitoring sites. Listed below by date, site and concentration as measured by a continuous Federal Equivalent Method monitor (FEM) are the seven Draft EE's.

<b>April 11-12, 2018</b> Niland-161 µg/m3; Brawley-183 µg/m3; Calxico -162 µg/m3; El Centro-158 µg/m3;	<b>April 16, 2018</b> Brawley-407 µg/m3; Calxico-407 µg/m3 El Centro-173 µg/m3; Niland-222 µg/m3; Westmorland-351 µg/m3
<b>April 19, 2018</b> Brawley-334 µg/m3; Calxico-178 µg/m3; Westmorland-186 µg/m3	<b>April 29, 2018 to May 1, 2018</b> Brawley-310 µg/m3; Niland-243 µg/m3; Westmorland-208 µg/m3; Brawley-270 µg/m3; Niland-162 µg/m3; Westmorland-207 µg/m3; Brawley-157 µg/m3
<b>May 11, 2018</b> Brawley-335 µg/m3; El Centro-166 µg/m3; Niland-215 µg/m3; Westmorland-414 µg/m3	<b>May 25, 2018</b> Brawley-169 µg/m3; Calxico -156 µg/m3
	<b>June 17, 2018</b> Brawley-168 µg/m3

The public and all interested parties are encouraged to review and comment on the seven Draft EE listed above. These demonstrations provide the supporting evidence that on the days indicated 2018 Air District air monitors were affected by transported elevated levels of particulate matter of aerodynamic size less than 10 microns (PM10). Winds, associated with a weather event suspended and transported PM10 into the region affecting areas within San Diego, Riverside, Yuma and Imperial counties. The seven Draft EE's provide the scientific justification for the requested exclusion. The Air District is soliciting and accepting comments for 30 days commencing the date of the publication of this notice. The final closing date for submitting comments is October 20, 2019 by close business.

The seven Draft EE's for the days listed above are available for download at the Air District web site at <https://apcd.imperialcounty.org/public-notices/> (under Public Notices; Exceptional Event). To view a hard copy of any of the seven Draft EE's, please visit the Air Pollution Control District office at 150 S. 9th Street, El Centro. Should you have any questions or concerns please feel free call our office between 8am and 5pm at (442) 255-1800 and ask for Monica N. Soucier.

**Fig C-9:** Is a copy of the Imperial County Air Pollution Control District official record (affidavit) affirming the publication of the notice of availability of the Exceptional Events Demonstration for May 11, 2018. The date for closing comments was October 20, 2019

## FIGURE C-10 IMPERIAL COUNTY COMMENTS REGARDING THE MAY 11, 2018 EE DEMONSTRATION

Awaiting Final Comment Period